



STONE FOREST ECO-DIAGRAM

Design: Jim Spear, Diagram: Li Haixin,
Eco-point captions: Audrey Gueho



Washable cookware only.

Limiting waste by avoiding pre-packaged amenities.

Limiting linen's changes as often as possible.

Recycling solid toilet waste.

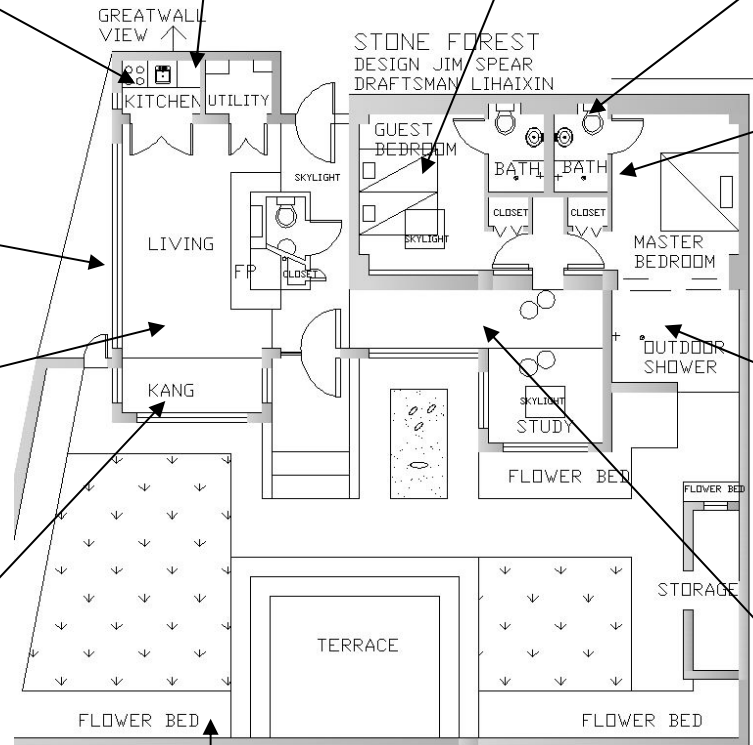
Minimization of power consumption by employee and seasonal adjustments.

Thermal-paned windows and exterior doors to decrease energy consumption.

Minimization of power consumption thanks to efficient insulation, natural ventilation and radiant floor heating.



Showers only to limit water consumption.



Roof windows and other big windows let us get as much natural light as possible, and reduce the use of lamps.

Garden plantings limited to native flora let protect biodiversity.

Using existing footprint means we avoid the consumption of energy and materials caused by new buildings, and we don't affect the traditional aspect of the village.

